



iGAZERSR33V Photo Eyes



OPERATING AND INSTALLATION INSTRUCTIONS



The iGAZERSR33V is an infrared photocell working at 12 or 24 V ac/dc.

The possible applications are in the security systems as well in presence revelation. Small dimensions, it can be mounted straight or 90 – 180 degrees oriented respect to the surface of support. Its case has o-ring gaskets and two fixing screws that allow the closing of the frontal shell with an IP 55 rating.

TECHNICAL SPECIFICATIONS

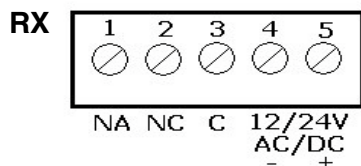
| | |
|---------------------------------|------------------|
| Power supply | 12/24 V ac/dc |
| TX consumption | 65 mA at 24 V ac |
| RX consumption | 30 mA at 24 V ac |
| Wave length | 950 nm |
| Modulation | 1,33 KHz |
| Current commutable by the relay | 1 A at 24 V ac |
| Rating | IP 55 |

NOTE:

The RX photocell has only one relay for the commutation.
Please refer to the regulations in force for a correct installation.

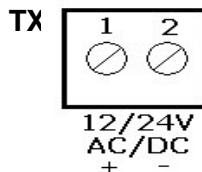
RX CONNECTIONS

- 1 N.O. Relay contact
- 2 N.C. Relay contact
- 3 Common Relay contact
- 4 Power supply 12/24 V ac/dc (-)
- 5 Power supply 12/24 V ac/dc (+)



TX CONNECTIONS

- 1 Power supply 12/24 V ac/dc (+)
- 2 Power supply 12/24 V ac/dc (-)



ASSEMBLY INSTRUCTIONS

Fix the cases of the photocells on the concrete walls or on the metallic supports at a distance from the ground of about 40 –60 cm and maximum 10 cm from the external line of a gate or just after the obstruction given by a possible security edge. When installed on leaf gates, the correct distance of the photocells must be measured from the open position. Photocells are self-centering. Nevertheless, to avoid mistakes, we suggest to install them on the same axis to obtain a correct working.

GASKET AND PRESSWIRE ASSEMBLY

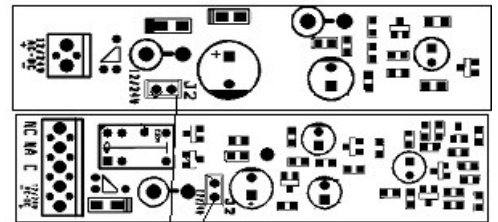
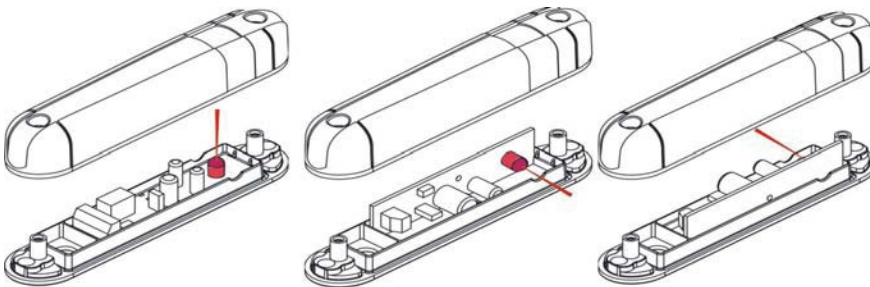
Install the o-ring gasket in the wire support on the sight photocell, check the right orientation at position on the upper side of the sight. Assure the two sides of the gasket up to 15 mm on both faces. Before installing the electric wire, insert the proper presswire in the hole in the back side of the case. After this operation, press the two shells towards themselves, close them with the fixing screws.

ORIENTATION AT 90° - 180°

FTC 911, besides the traditional mounting, can be oriented respect to the surface of support of 90° or 180°. Just orientate the inside electronics in the requested position. Two points of support are made to hold the electronic circuit. For the assembly, please follow the below illustrations.

ATTENTION:

Transmitter Solutions is not responsible for wrong connections or damages to persons or things. The installation must be done by qualified people



J2 INSERITO: 12V ac/dc
J2 NON INSERITO : 24V ac/dc

