

**Transmitter**SOLUTIONS®  
**SMART**

## Contents

Operation Instructions 2

Installation Diagrams 3

Wiring Diagrams 4

Enrolling Door Controls 8

Finger Placement 10



DIRECT 801.508.6967 • 866.975.0101 x 207  
3788 W. 2270 S. Suite E, Salt Lake City, UT 84120

[www.transmittersolutionsmart.com](http://www.transmittersolutionsmart.com)

# Installation & User Manual

### Technical Specs

Power Supply	12V DC only
Current consumption	70mA
Current consumption with load (max)	100mA
Relay Contact Rating	5 Amps / 240V ac
Operating Temperature	-20 °C to +60 °C
Moisture Resistance	IP 65
Dimensions - Surface Mount	<b>W.</b> 87mm <b>D.</b> 35mm <b>H.</b> 160mm
Number of Users	10000

### Restoring Factory Settings

Code	Description
55	Restoring Factory Default Settings

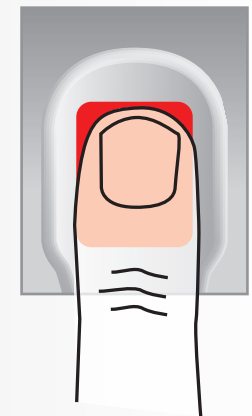
Example: To Restore Factory Default Settings



**Note:** If programming code is lost, Remove the Tamper Wing and hold down the 5 key during power-up and enter the default programming code '6666'.

**Note:** The Door Control can only be defaulted if it is not part of a network. i.e If the Door Control has not been assigned an address.

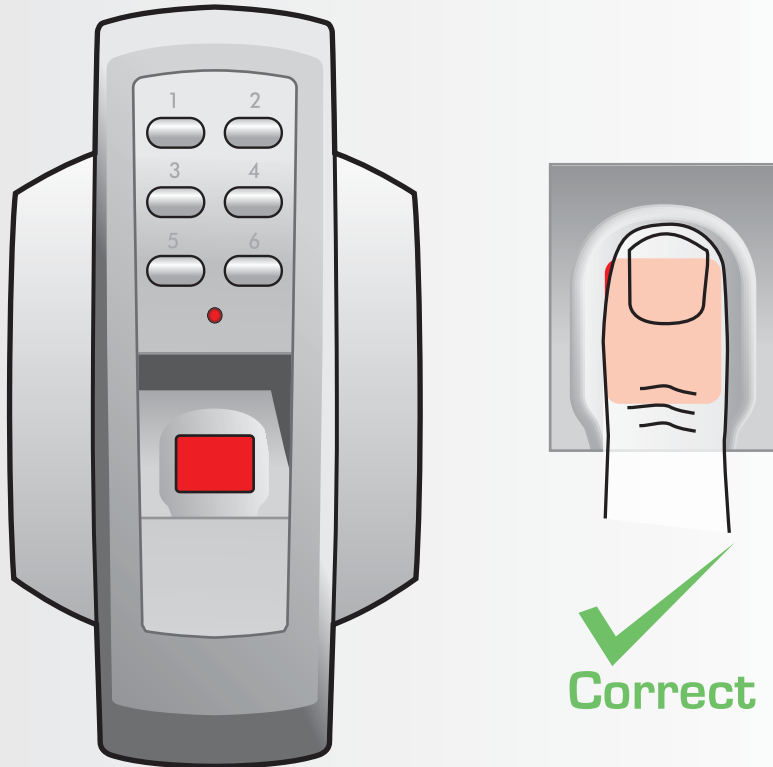
### Incorrect Finger Placement



**X**  
**Incorrect**

**Note:** Incorrect placement : finger does not fully cover the sensor window. The door control will not respond and the red light will not turn off if the sensor window is not fully covered by the finger.

## Correct Finger Placement

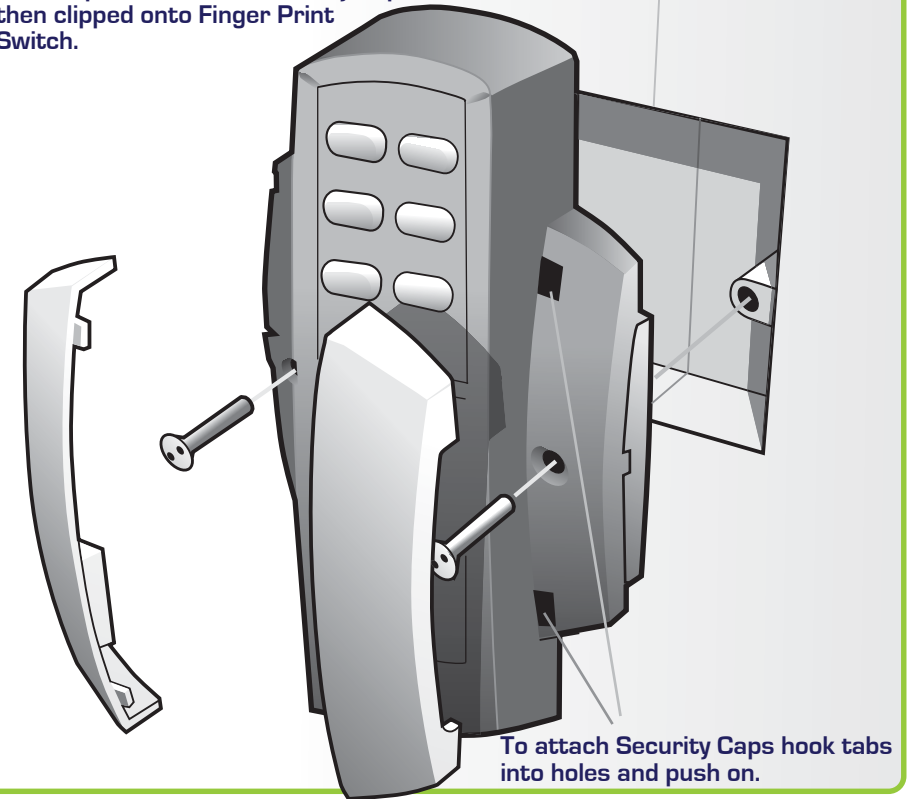


**Note:** Ensure that the finger is centered and placed flat to the surface and fully covers the sensor window.

**Note:** Finger must remain on the sensor window until the door control acknowledges that the finger has been scanned by sounding a beep and turning off the red light. This will take approximately 1 second.

## Flush Mounting

Finger Print Switch is mounted to patrix box using security screws provided. Both Security Caps are then clipped onto Finger Print Switch.

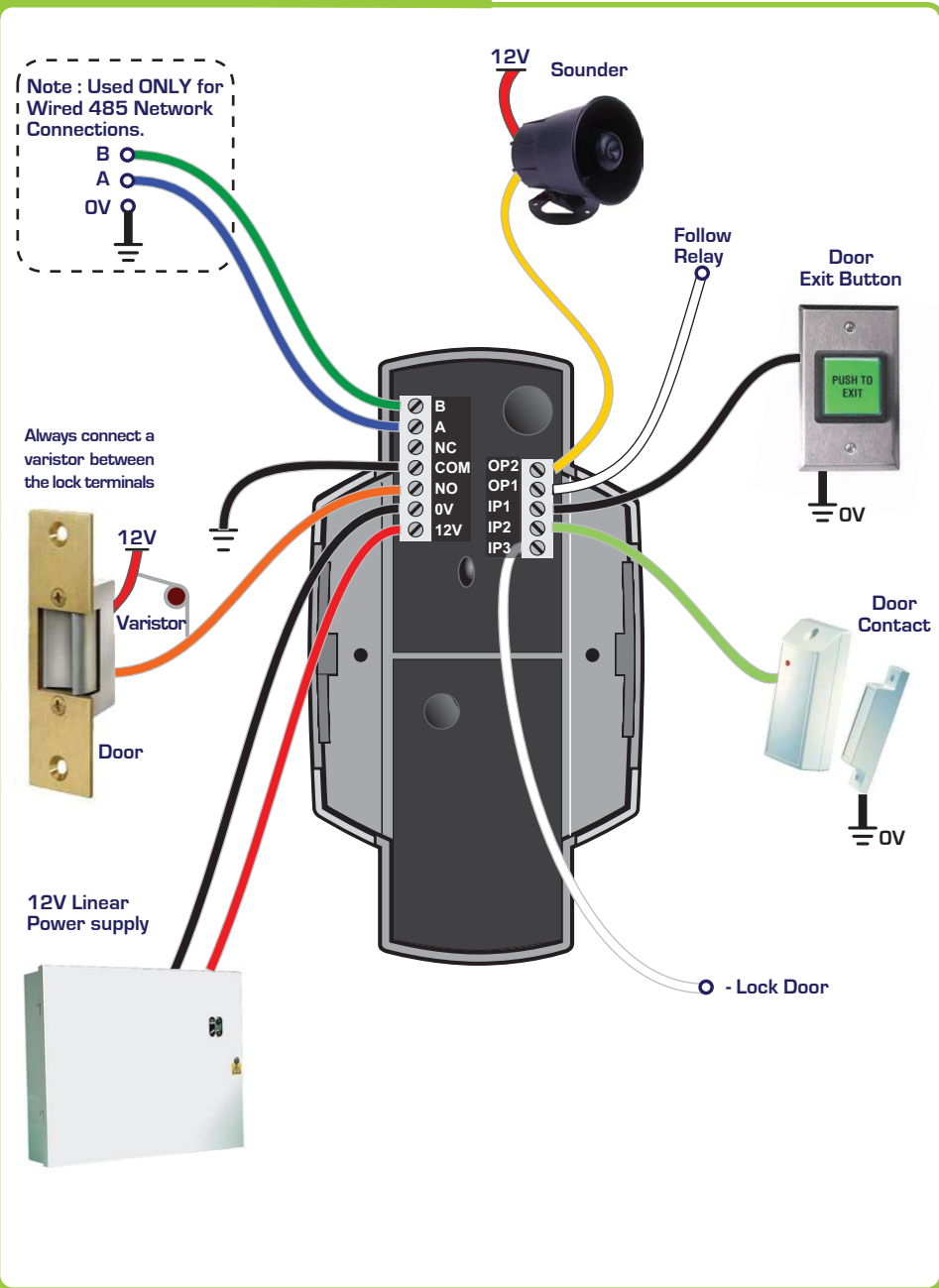


To attach Security Caps hook tabs into holes and push on.



To release Security Caps push a screwdriver into slots on the side and pull forward.

Wiring Diagrams with External IP3 Function



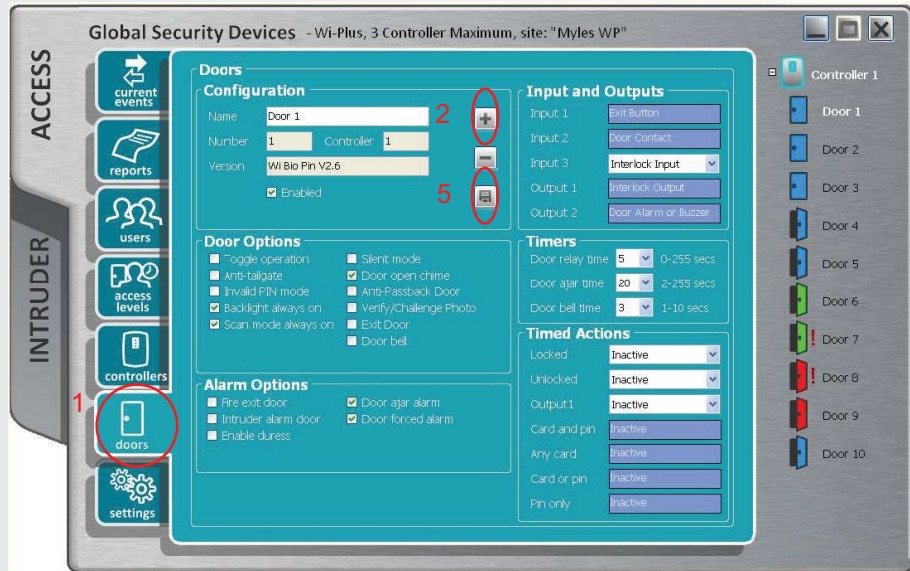
Assigning a Door Address on Wireless Network

Step	Description
1	On the Controller screen: Click 'Allow Doors to Join this Controller'
	All Door Controls that don't have an address start to beep out the next available address.
2	Hit any key on the 'beeping' Door Control to assign this address.
	When a Door Control is assigned an address, all unassigned Door Controls will start to beep the next available address.
3	When all doors are assigned: Click 'Secure Network'

Assigning a Door Address on a Wired 485 Network

Step	Description
1	Right Click on the Controller Icon & select 'Manually Assign Addresses'
	Follow Step 2 above to complete the process.

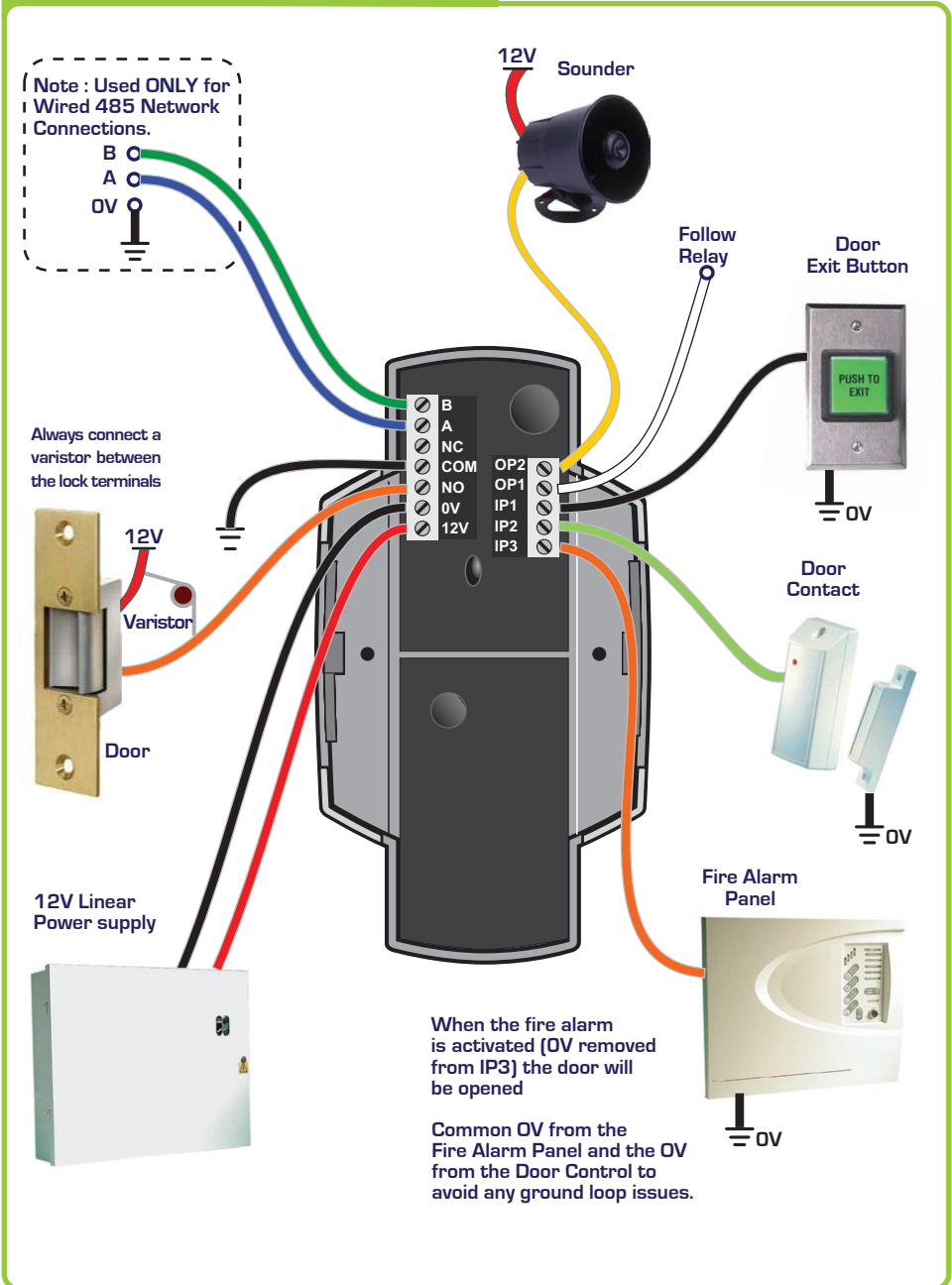
### Adding Door Controls



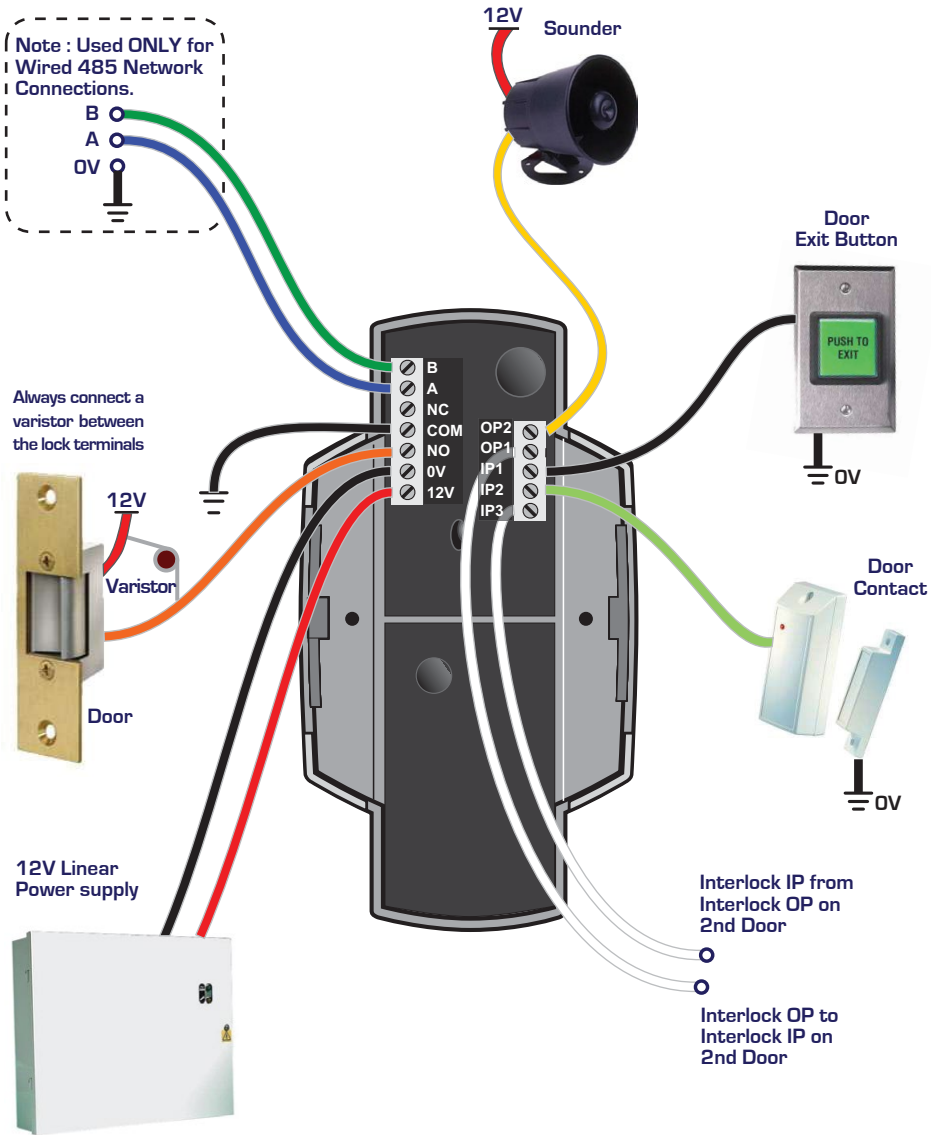
Step	Description
1	Click the Doors Icon on the left hand toolbar
2	Click 'Add New Door'
3	The Door is added to the Controller.
4	Configure the required Door settings : Door Timers, Alarm Options, Door Options, Timed Actions, Inputs & Outputs.
5	Click 'Save' to transmit the changes to the GSD Controller.

**Note:** Placing the mouse cursor over a door feature will display a description of the feature.

### Wiring Diagrams with Fire Alarm Override



Wiring Diagrams with Interlock Connections



Wiring Diagrams with Alarm Panel Connections

