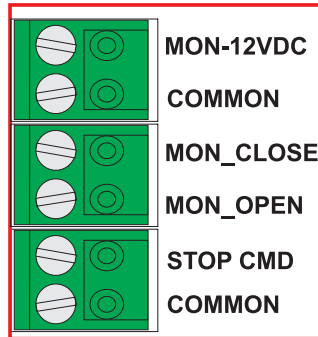


ALL-O-MATIC® - Entrapment Protection

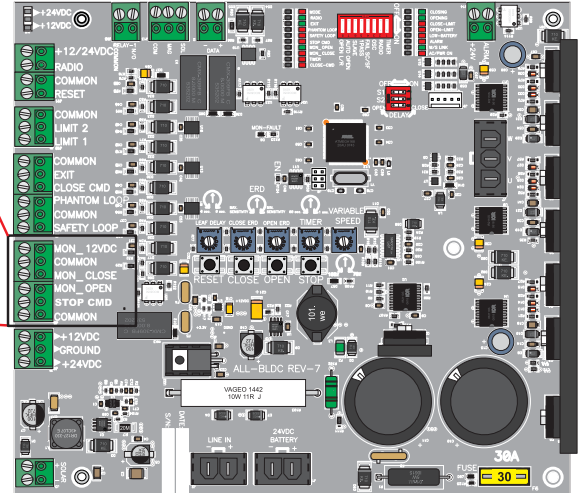
GATE BEHAVIOR:

MON_CLOSE (an LED will indicate when an obstruction is detected or device not present)
 This input is only for the close direction monitored entrapment protection device. When gate is closing it will open to the full open position if an obstruction is sensed and resets the auto close timer. This input does nothing in the opening direction. If a device is not detected or it senses a fault (**MON - FAULT** LED with turn ON), the operator will only work on constant pressure actuated switch.



MON_OPEN (an LED will indicate when an obstruction is detected or device not present)
 This input is only for the open direction monitored entrapment protection device. When gate is opening it will reverse 2 seconds and stop if an obstruction is sensed. This input does nothing in the closing direction. On power up, if a device presence is not detected the operator will assume one is not required for opening direction. If a device is connected and board detects a fault (**MON FAULT** LED will turn ON), the operator will only work on constant pressure actuated switch.

Wiring for brushless DC gate operators

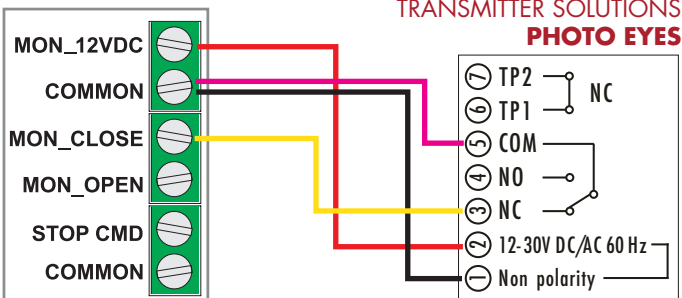


PCB model: ALL-BLDC

Monitored entrapment protection devices use four wires to connect to the board. From the device, connect **relay common** to board **COMMON** and **N.C.** relay contact to assigned **MON_OPEN** or **MON_CLOSE** input. Connect the power wires to the COMMON and MON-2VDC. **VERY IMPORTANT:** the MON-12VDC supply must be used (not the normal 12VDC terminal) to properly monitor entrapment protection devices.

EYE CLOSE

All-O-Matic BLDC

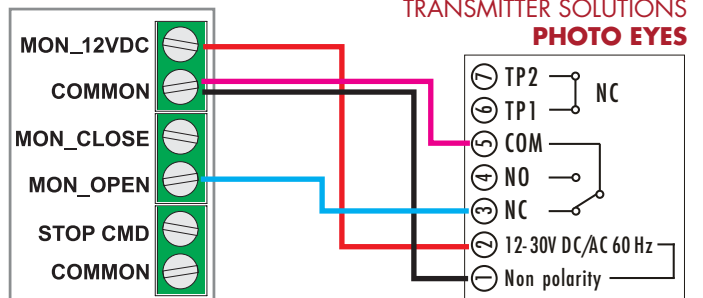


iGAZE: R50LR-UL, R32P-UL, SR66HD, or SR33HD



EYE OPEN

All-O-Matic BLDC



iGAZE: R50LR-UL, R32P-UL, SR66HD, or SR33HD



Used with permission of All-o-matic® Inc. All graphics, language and layouts are copyright protected by All-o-matic®All-o-matic. All-o-matic® assumes no responsibility for the accuracy of the information provided by Transmitter Solutions.

The Transmitter Solutions products listed have not been tested nor listed by All-o-matic® as being UL Compliant for their system. All testing has been conducted by Transmitter Solutions.