

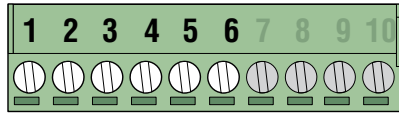
## DOORKING® - Entrapment and Safety Protection

### External Entrapment Protection Devices:

In addition to the inherent reversing sensor system, this operator has a UL 325 terminal for the connection of **photo sensors**-Type B1 and/or **reversing edges**-Type B2 entrapment protection required by UL 325 standards. **At least ONE external entrapment protection device MUST be installed or the operator will NOT function.** Install these devices where the risk of entrapment or a safety hazard exists, examples of which are shown below. Specific installations will vary.

### UL 325 Terminal

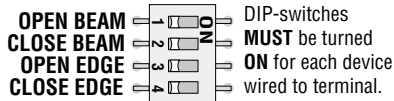
Connect **ONLY MONITORED** Devices



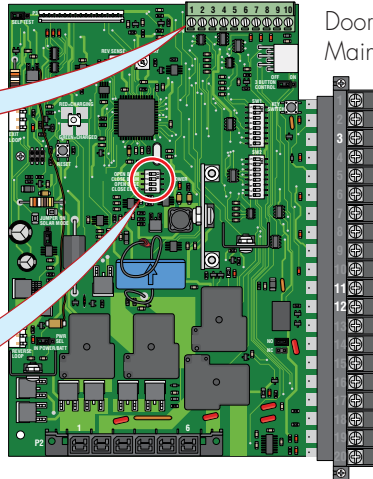
- 1 OPEN BEAM
- 2 CLOSE BEAM
- 3 OPEN BEAM
- 4 CLOSE EDGE
- 5 GROUND (Common)
- 6 GROUND (Common)
- 7 GROUND (Common)
- 8 GROUND (Common)
- 9 GROUND (Common)
- 10 GROUND (Common)

**Note:**  
All safety devices are wired to the primary operator when using dual gate operators.

**ONLY connect monitored devices.**



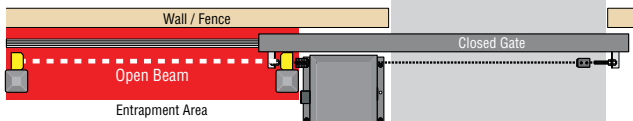
DIP-switches **MUST** be turned **ON** for each device wired to terminal.



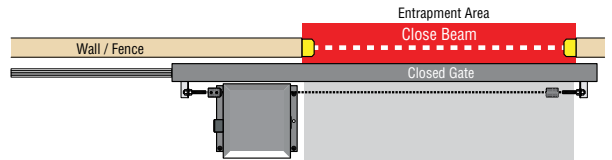
DoorKing 9024 20-PIN Main Terminal

Only 1 monitored Device can be connected to each input. An **OPTIONAL** Expansion Kit (sold separately) will allow connection for additional devices.

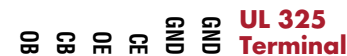
**1 OPEN Beam Stop:** Obstructed opening-direction photo beam will stop the gate **during the opening-direction only**. Gate will resume the open cycle when the obstructed photo beam has been cleared.



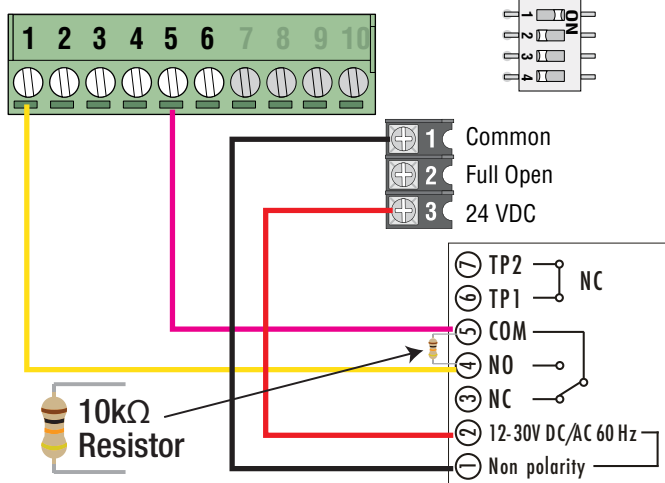
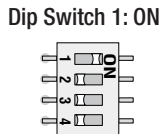
**2 CLOSE Beam Reverse:** Obstructed closing-direction photo beam will reverse the gate to the open position and reset the close-timer **during the closing-direction only**. Gate will close when timer times out.



### OPEN BEAM



### UL 325 DIP-Switches

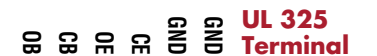


TRANSMITTER SOLUTIONS **PHOTO EYES**

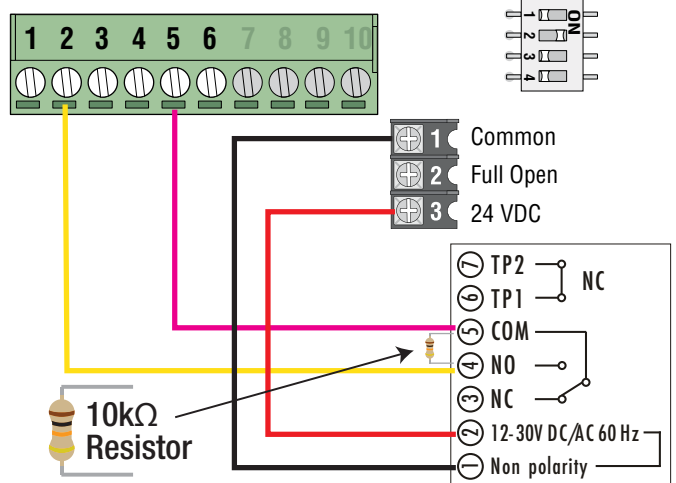
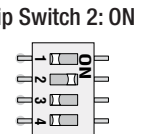


iGAZE: R50LR-UL, R32P-UL, SR66HD, or SR33HD

### CLOSED BEAM



### UL 325 DIP-Switches



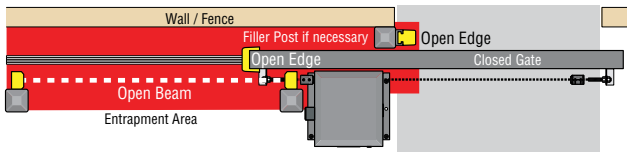
TRANSMITTER SOLUTIONS **PHOTO EYES**



iGAZE: R50LR-UL, R32P-UL, SR66HD, or SR33HD

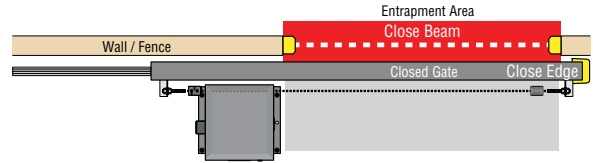
**3 OPEN Edge/Beam Reverse:** Obstructed reversing edge or photo beam will reverse the gate to the close position **during the opening-direction only.**

- After the gate reverses to the close position, any opening input will cycle the gate again. **Note:** If the gate is opening by a time clock and a edge/beam gets obstructed, the gate will return to the closed position and another input (automatic exit loop, reverse loop, remote etc.) is needed to cycle the gate open again.

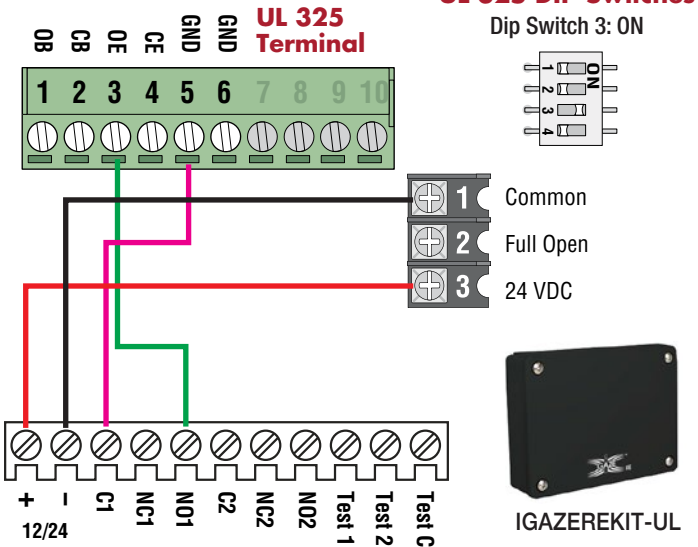


**4 CLOSE Edge/Beam Reverse:** Obstructed reversing edge or photo beam will reverse the gate to the open position **during the closing-direction only.**

- After the gate reverses to the open position, the close-timer will time out and close the gate (if it is turned on).
- If a second sequential obstruction is encountered prior to the gate reaching the close limit, the gate will **reverse to full open position** and enter a soft shutdown condition.

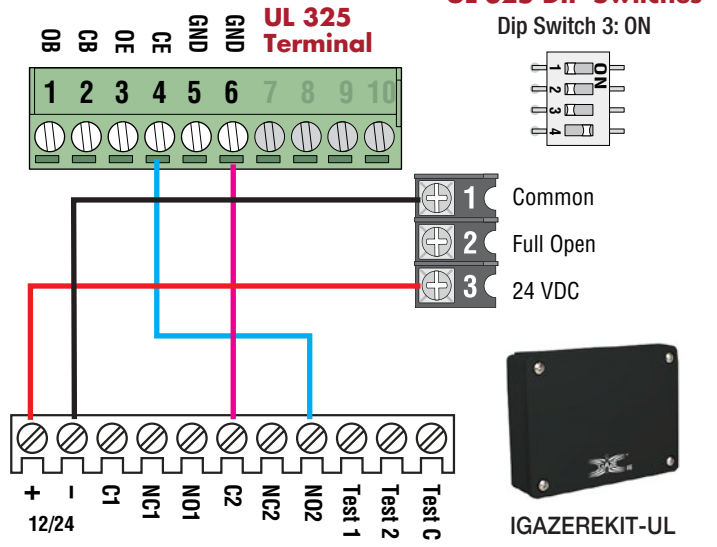


### OPEN EDGE



TRANSMITTER SOLUTIONS iGAZE RE UL10k $\Omega$  KIT

### CLOSED EDGE



TRANSMITTER SOLUTIONS iGAZE RE UL 10k $\Omega$  KIT

Used with permission of DoorKing® Inc. All graphics, language and layouts are copyright protected by DoorKing® Inc. of Inglewood, CA.

DoorKing assumes no responsibility for the accuracy of the information provided by Transmitter Solutions.

**Transmitter**  
SOLUTIONS®

(866) 975-0101 • (866) 975-0404 fax  
www.transmittersolutions.com