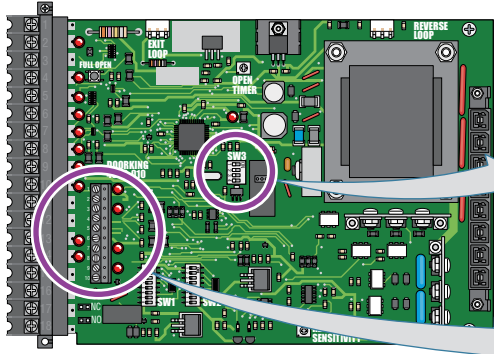


## DOORKING® 9150 - Entrapment and Safety Protection

### External Entrapment Protection Devices:

In addition to the inherent reversing sensor system, this operator has a UL 325 terminal for the connection of **photo sensors**-Type B1 and/or **reversing edges**-Type B2 entrapment protection required by UL 325 standards. **At least ONE external entrapment protection device MUST be installed or the operator will NOT function.** Install these devices where the risk of entrapment or a safety hazard exists, examples of which are shown below. Specific installations will vary.

### UL 325 Terminal



DoorKing 4620 18-PIN Main Terminal

#### UL 325 LEDs:

**LED ON:** Connected device has been activated. LED remains off during normal operation.

**LED Flashing:** Connected device is in fault. Wiring to device is bad.

### SW3 UL 325 DIP-Switches



- 1 - OPEN Beam
- 2 - CLOSE Beam
- 3 - OPEN Edge
- 4 - CLOSE Edge

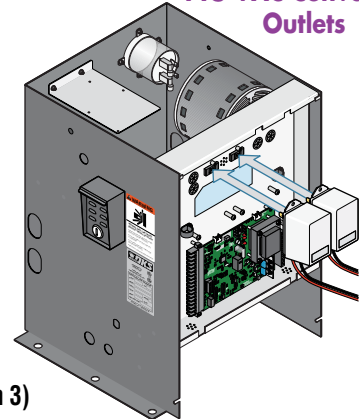
DIP-switches **MUST** be turned **ON** for each device wired to terminal.

- 1 - OPEN Beam STOP (Switch 1)
- 2 - Ground (Common)
- 3 - CLOSE Beam REVERSE (Switch 2)
- 4 - Ground (Common)
- 5 - 24 VAC 250 ma. Max
- 6 - Ground (Common)
- 7 - OPEN Edge/Beam REVERSE (Switch 3)
- 8 - Ground (Common)
- 9 - CLOSE Edge/Beam REVERSE (Switch 4)
- 10 - Ground (Common)

**UL 325 Terminal and LEDs**  
Connect **ONLY MONITORED** Devices

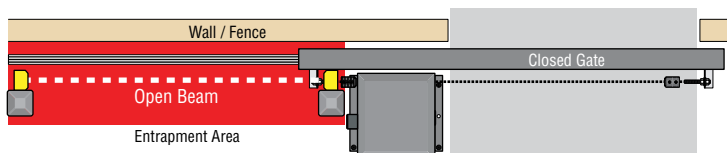
**Monitored Device Note:** Only 1 monitored Device can be connected to each input. An **OPTIONAL** Expansion Board (sold separately) will allow connection for additional devices.

### 115 VAC Convenience Outlets

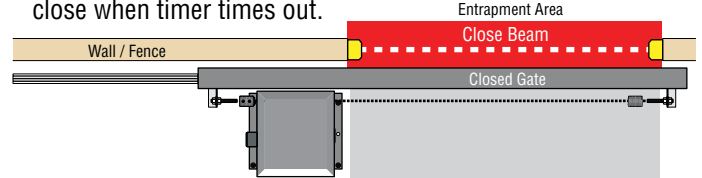


**2, 4, 6, 8 & 10 Ground (Common):** Common terminal for all MONITORED entrapment protection device inputs.

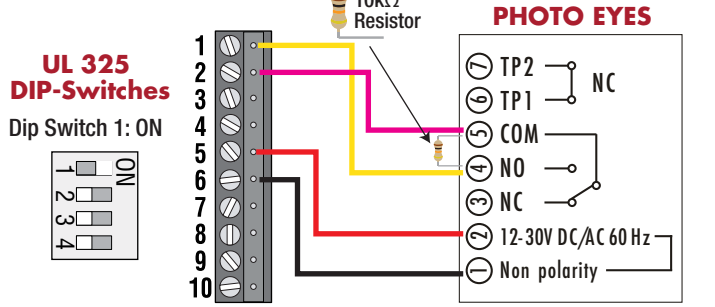
**1 OPEN Beam Stop:** Obstructed opening-direction photo beam will stop the gate **during the opening-direction only**. Gate will resume the open cycle when the obstructed photo beam has been cleared.



**3 CLOSE Beam Reverse:** Obstructed closing-direction photo beam will reverse the gate to the open position and reset the close-timer **during the closing-direction only**. Gate will close when timer times out.



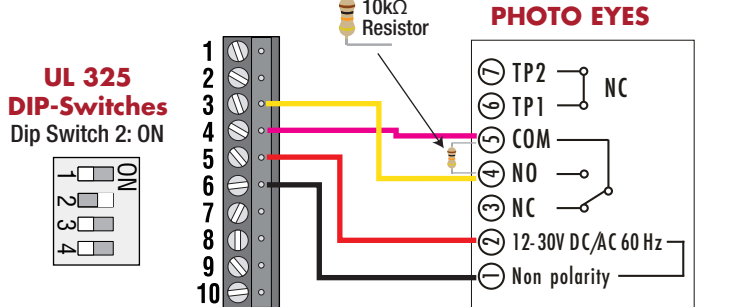
### OPEN BEAM



**UL 325 Operator Terminal** iGAZE: R50LR-UL, R32P-UL SR66HD, or SR33HD



### CLOSED BEAM



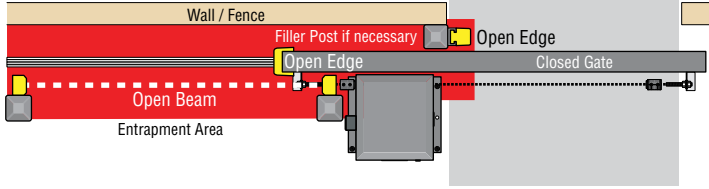
**UL 325 Operator Terminal** iGAZE: R50LR-UL, R32P-UL SR66HD, or SR33HD



**7 OPEN Edge/Beam Reverse:** Obstructed reversing edge or photo beam will reverse the gate to the close position **during the opening-direction only.**

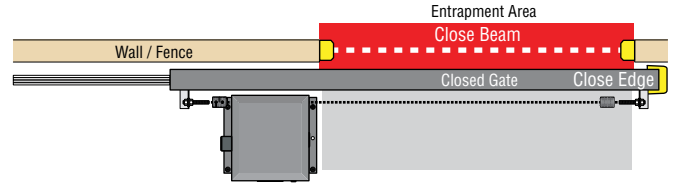
- After the gate reverses to the close position, any opening input will cycle the gate again.

Note: If the gate is opening by a time clock and a edge/beam gets obstructed, the gate will return to the closed position and another input (automatic exit loop, reverse loop, remote etc.) is needed to cycle the gate open again.



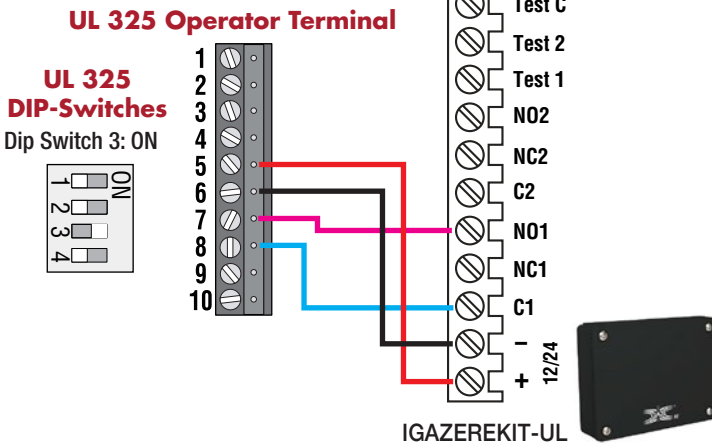
**9 CLOSE Edge/Beam Reverse:** Obstructed reversing edge or photo beam will reverse the gate to the open position **during the closing-direction only.**

- After the gate reverses to the open position, the close-timer will time out and close the gate (if it is turned on).
- If a second sequential obstruction is encountered prior to the gate reaching the close limit, the gate will **reverse to full open position** and enter a soft shutdown condition.



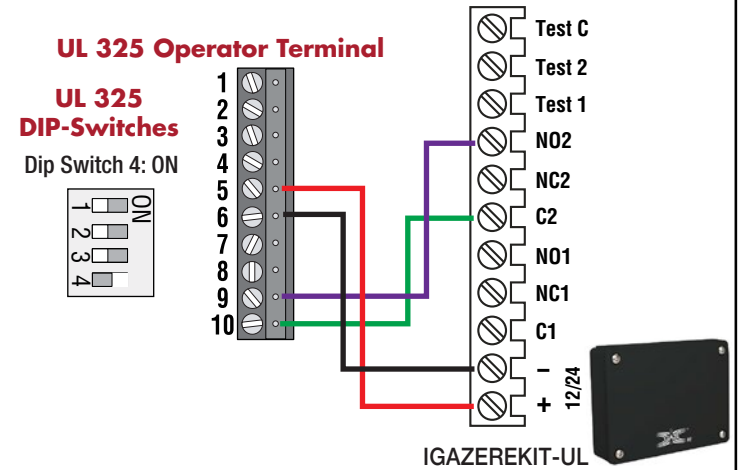
**OPEN EDGE**

**TRANSMITTER SOLUTIONS  
iGAZE RE UL 10kΩ KIT**



**CLOSE EDGE**

**TRANSMITTER SOLUTIONS  
iGAZE RE UL 10kΩ KIT**



Used with permission of DoorKing® Inc. All graphics, language and layouts are copyright protected by DoorKing® Inc. of Inglewood, CA. DoorKing® assumes no responsibility for the accuracy of the information provided by Transmitter Solutions.

The Transmitter Solutions products listed have not been tested nor listed by DoorKing® as being UL Compliant for their system. All testing has been conducted by Transmitter Solutions.



(866) 975-0101  
(866) 975-0404 fax  
www.transmittersolutions.com