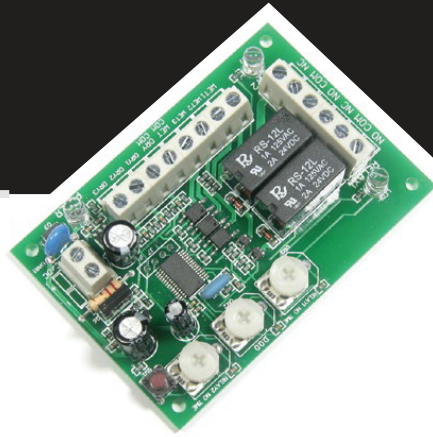


Dolphin M-6

MULTI-FUNCTION RELAY



The Dolphin M-6 is a programmable relay module that can be used for many applications. Very user friendly, the module provides a single mode select push button to select the different modes of operation. (No dip switches)

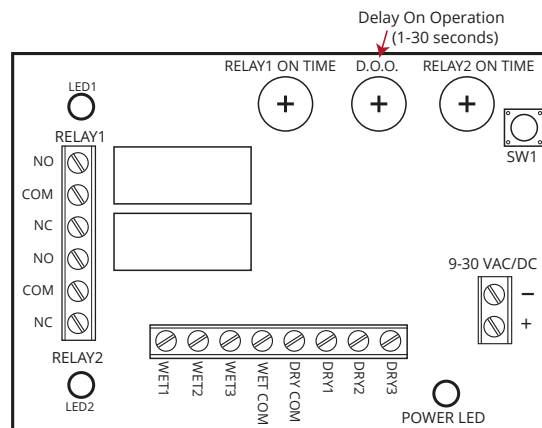
SPECS

Size	3 1/4" x 2 1/4" x 3/4"
Mounting	Double sided foam tape
Operating voltage	9 -30 volts Ac or Dc
Current Draw	18 mA Standby 40 mA Max.
Inputs	3 - dry contacts 3 - wet inputs 9 -30 Vac or Dc, optically Isolated, non-polarity Sensitive
Outputs	2 - form C (SPDT)
Relay contact rating	2 amps @ 12VDC
Time delays	Relay 1 on time 05-30 sec. Delay on operate Relay 2 1-30 sec Relay 2 on time 0.5-30 sec.

PROGRAMMING INFORMATION NEXT PAGE



PROGRAMMING OPTIONS



Mode 1 - Momentary operation

Typical momentary timed operation. Used for interfacing electric locks with automatic door operators. Can also be used as a fully functional bi-directional door sequencer, no need to use a second relay.

Mode 2 - Apartment or access control

Used to interface automatic door operators directly to apartment interphone panels. Isolates interphone panel voltages from automatic door operator. Also can be used to interface with access control systems that have timed lock functions.

Mode 3 - Ratchet or latching operation

Push button activates strike relay for the timed period then latches the operator relay 2 indefinitely, until switch is activated a second time.

Mode 4 - Smoke Evacuation

For wiring a door operator to a fire alarm panel for smoke evacuation purposes. In this mode the strike relay will energize momentarily, the operator relay will stay energized for as long as the input is maintained.

Mode 5 - Lock-out relay

Sensor inhibit, inhibiting of a door mounted sensor preventing sensor from acting like a motion sensor. Sensor only active once push button has been activated

Mode 6 - Washroom control relay

Single occupant barrier free washroom control. Allows the door to be electronically locked from the inside while removing the exterior button from the circuit. Door position switch or interior push button resets system. Installer should recommend that a "store room," function passage set be used. Handle always locked from the exterior, and free on the interior.