

318 HIVE® GDO RECEIVER

USER MANUAL



Part NO: HIVE318ALPGDO

V.4.11.17



HIVE™

Transmitter 
SOLUTIONS®

TECHNICAL SPECIFICATIONS

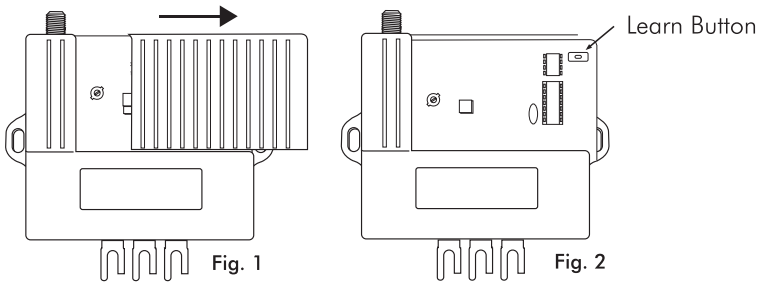
Output Load MAX:	15A/125AC
Input Load:	12-24VAC/DC Auto Detecting
Power Supply Consumption:	
Relay Active:	70mA
Relay Not Active:	32mA
Max Applicable Power:	25VDC
Operating Temperature:	-40°F to 158°F

1. ACCESS THE CIRCUIT BOARD

Open the access door by sliding it to the right. See Fig 1.

You can now see the circuit board inside. See Fig 2.

The Hive receiver will automatically detect voltage between 12-24 V, either AC or DC.



2. SET THE RECEIVER

This receiver can mount directly to the operator. It can also be remotely installed if the operator terminal strip is not easily accessible or if power for the receiver is unavailable from the operator. To directly mount the receiver, loosen the terminal screws, insert the lugs on the receiver under the screw heads under the screw heads with the wall button wires, and then tighten the screws. See Fig. 5.

For remote installation, mount the receiver near the operator and connect the receiver to the operator terminals using connecting wires. Insert the lugs under the screw heads on the operator as above, and slip the connectors at the other end of the adapter wire to the flat side of each lug on the receiver. See Fig. 6.

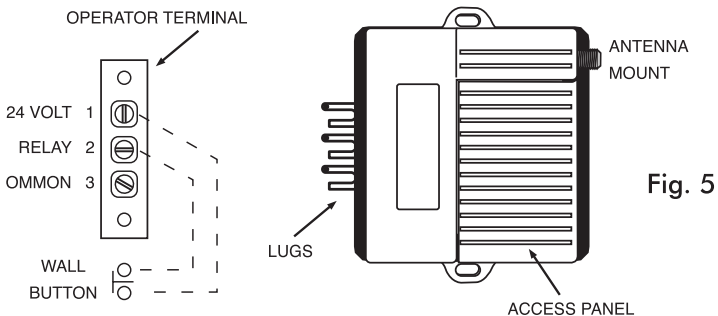
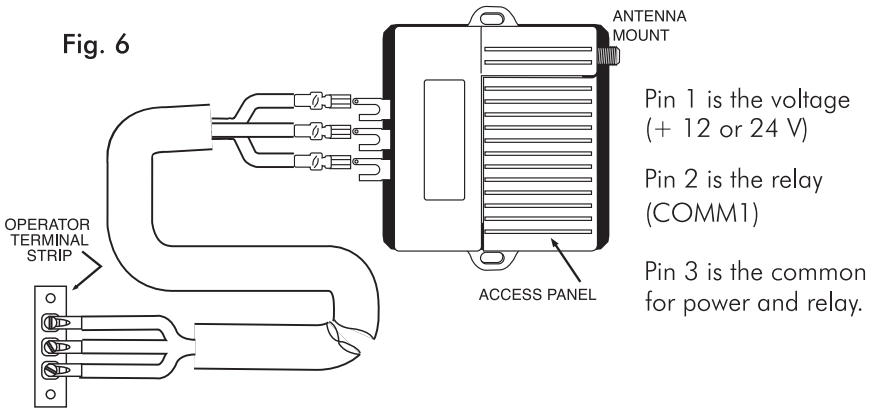


Fig. 6



3. INSTALLATION

- A.** Mount the receiver in a safe and convenient location on your installation. Remember to take care to avoid items that may cause interference with the receiver such as electric motors, etc. The receiver can be attached with either the mounting screw holes of the housing or by using industrial strength velcro.
- B.** Install the coax antenna (provided) by screwing it onto the antenna mount which protrudes from the top of the housing.
- C.** After you have completed the installation check for operational range from various areas around the installation. If the range is less than desired, try re-positioning the antenna, receiver, or both and re-test the range.

4. TESTING

- A.** Verify the receiver has power. This can be verified by observing if LED1 and LED2 are illuminated. See Fig 3.
 - B. TRANSMITTER MEMORIZATION** Keep the LRN button (See Fig. 2) pressed for .5 sec. until the red LED illuminates. Then release the LRN button and push the key of the transmitter. Once the red LED blinks rapidly, the procedure is complete. The key of the transmitter will activate the output COMM1 of the receiver.
 - C. COMPLETE MEMORY ERASURE** Keep the LRN button pressed down for 10 seconds. All LEDs blink rapidly and the memory is completely erased.
 - D. FUNCTION MODE** Push mode: By pressing the key of the transmitter, COMM1 is connected until the button is released. Current of the relay should be 15A. Memory capacity is 50 transmitter user codes. Carrier frequency is 318 MHz. The receiver will operate with either 12 or 24 volts, AC or DC.
- E.** Close the access door on the receiver. See Fig. 4.



Fig. 3

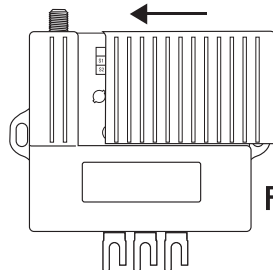


Fig. 4

5. WARRANTY

The warranty period of this product is 24 months, beginning from the manufacturing date. During this period, if the product does not operate correctly, due to a defective component, the product will be repaired or replaced at the sole discretion of Transmitter Solutions. This warranty does not extend to the product casing which can be damaged by conditions outside of the control of Transmitter Solutions.

EXCEPT AS SET FORTH ABOVE, TRANSMITTER SOLUTIONS MAKES NO WARRANTIES REGARDING THE GOODS, EXPRESS OR IMPLIED, INCLUDING WARRANTY OF MERCHANTABILITY OR WARRANTY OF FITNESS FOR A PARTICULAR PURPOSE. BUYER MAKES NO RELIANCE ON ANY REPRESENTATION OF TRANSMITTER SOLUTIONS, EXPRESS OR IMPLIED, WITH REGARD TO THE GOODS AND ACCEPTS THEM "AS-IS/WHERE-IS". TRANSMITTER SOLUTIONS SELLS THE GOODS TO BUYER ON CONDITION THAT TRANSMITTER SOLUTIONS WILL HAVE NO LIABILITY OF ANY KIND AS A RESULT OF THE SALE. BUYER AGREES THAT TRANSMITTER SOLUTIONS SHALL HAVE NO LIABILITY FOR DAMAGES OF ANY KIND, WHETHER DIRECT, INCIDENTAL OR CONSEQUENTIAL DAMAGES, INCLUDING INJURIES TO PERSONS OR PROPERTY, TO BUYER, ITS EMPLOYEES OR AGENTS, AS A RESULT OF THE SALE. BUYER ALSO AGREES TO HOLD TRANSMITTER SOLUTIONS HARMLESS FROM ANY CLAIMS BUYER, OR ANY THIRD PARTY, MAY HAVE AS A RESULT OF BUYER'S USE OR DISPOSAL OF THE GOODS. BUYER HAS READ THIS DISCLAIMER AND AGREES WITH ITS TERMS IN CONSIDERATION OF RECEIVING THE GOODS.



2480 South 3850 West, Suite B
Salt Lake City, UT 84120
(866) 975-0101 • (866) 975-0404 fax
www.transmittersolutions.com